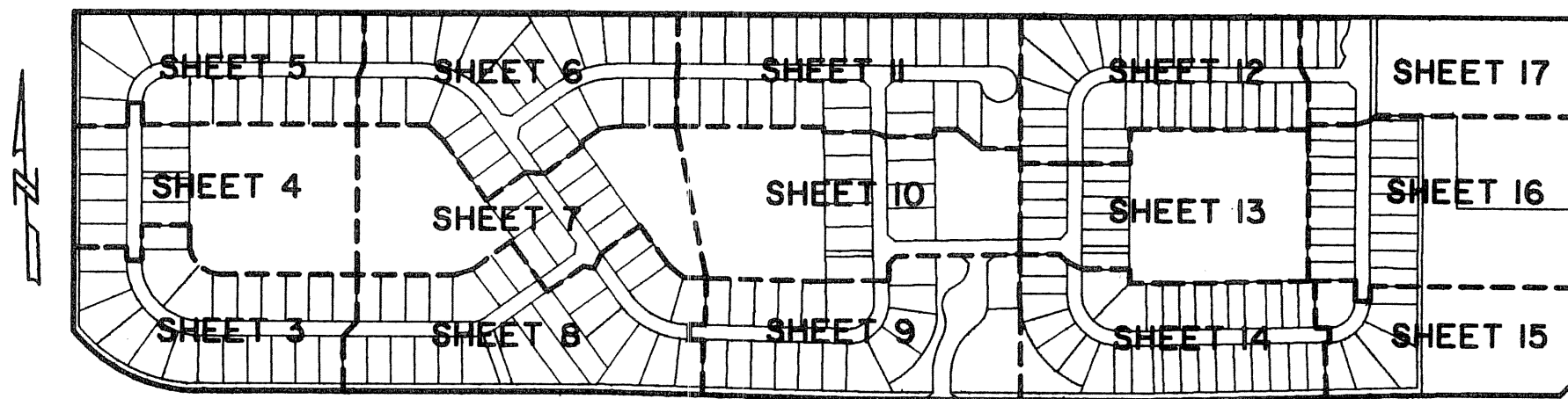
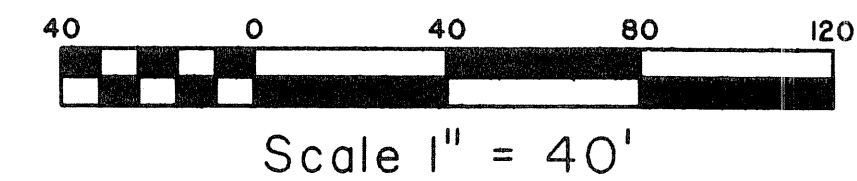


LANIER PROPERTY

LYING IN SECTION 13, TOWNSHIP 44 SOUTH, RANGE 41 EAST,
VILLAGE OF WELLINGTON, PALM BEACH COUNTY, FLORIDA.
SHEET 8 OF 17 MARCH, 2006



KEY MAP
NOT TO SCALE



Scale 1" = 40'

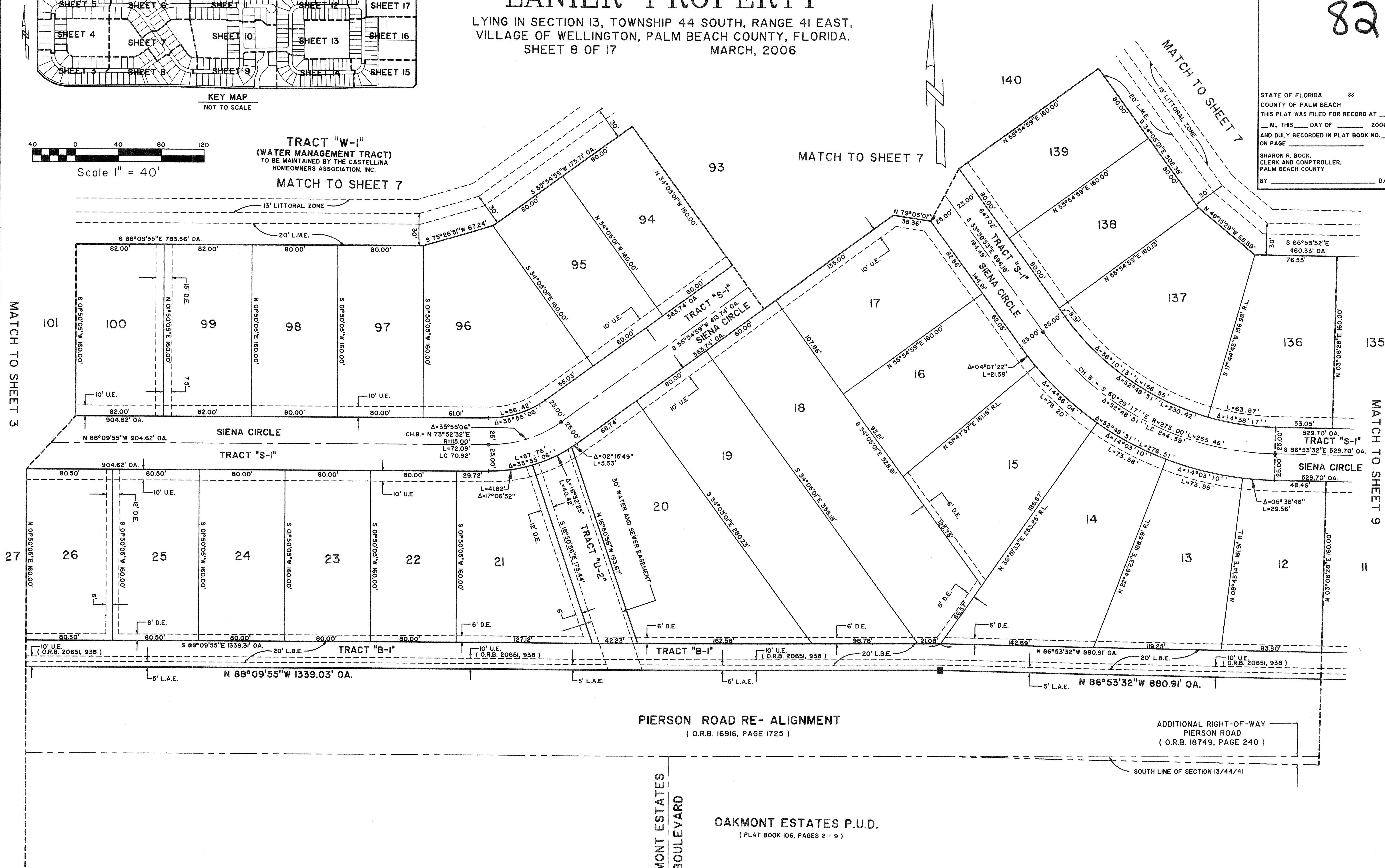
TRACT "W-1"
(WATER MANAGEMENT TRACT)
TO BE MAINTAINED BY THE CASTELLINA
HOMEOWNERS ASSOCIATION, INC.

MATCH TO SHEET 7

STATE OF FLORIDA SS
COUNTY OF PALM BEACH
THIS PLAT WAS FILED FOR RECORD AT _____
M. THIS DAY OF 2006
AND DULY RECORDED IN PLAT BOOK NO. _____
ON PAGE _____
SHARON R. BOCK,
CLERK AND COMPTROLLER,
PALM BEACH COUNTY
BY _____ D.C.

MATCH TO SHEET 3

MATCH TO SHEET 9



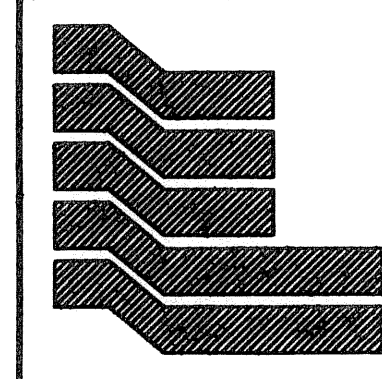
PIERSON ROAD RE-ALIGNMENT
(O.R.B. 16916, PAGE 1725)

ADDITIONAL RIGHT-OF-WAY
PIERSON ROAD
(O.R.B. 16749, PAGE 240)

SOUTH LINE OF SECTION 13/44/41

OAKMONT ESTATES
BOULEVARD

OAKMONT ESTATES P.U.D.
(PLAT BOOK 106, PAGES 2 - 9)



Landmark Surveying & Mapping Inc.
1850 Forest Hill Boulevard
Ph. (561) 433-5405 Suite 100 W.P.B. Florida
LB # 4396

LANIER PROPERTY